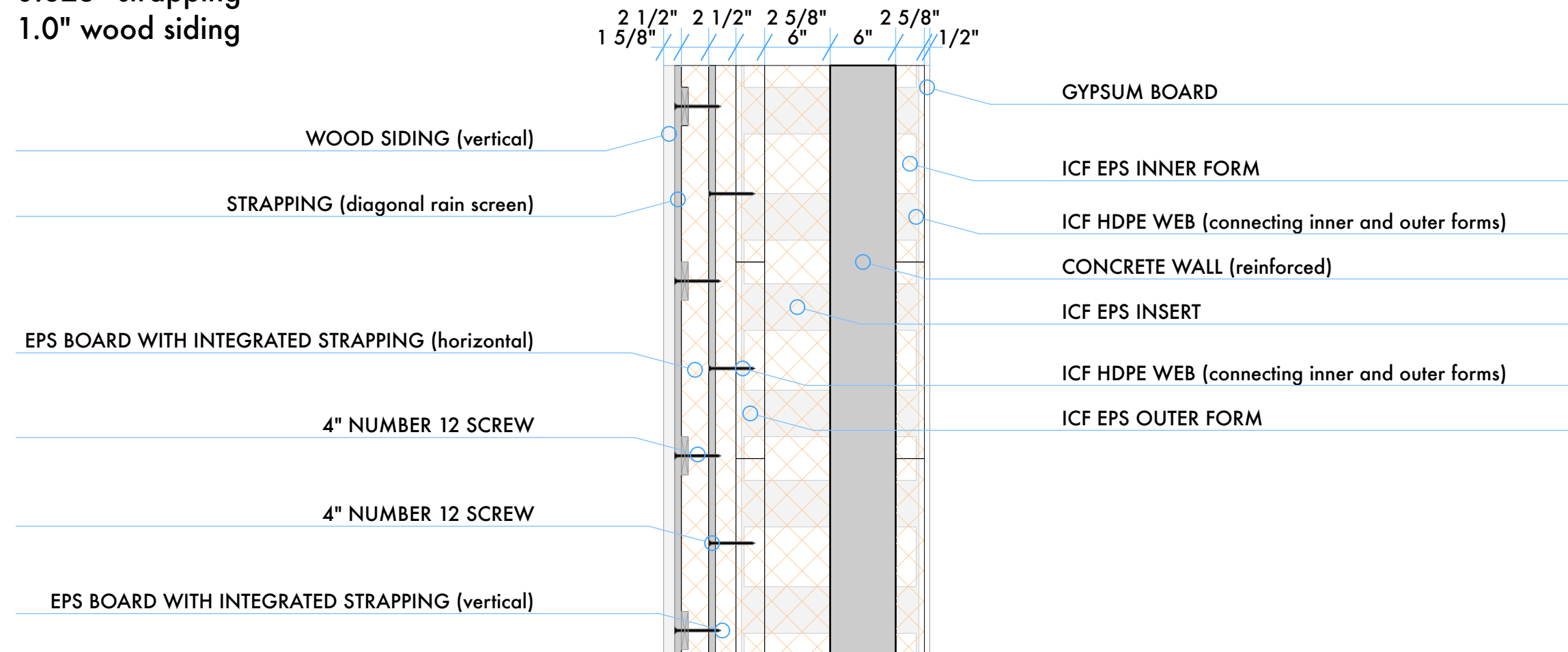


TYPICAL ABOVE GRADE ICF WALL ASSEMBLY (Nominal: R73.776)

- 0.5" gypsum (@0.45/") = R0.23
- 2.625" EPS (@4.493/") = R11.794
- 6" concrete (@0.5/" = R3
with 10M verticals at 16" o/c
with 10M horizontals at 36" o/c
- 6" EPS (@4.493/") = R26.958
- 2.625" EPS (@4.493/") = R11.794
- 2.5" EPS (@4.0/") = R10
- 2.5" EPS (@4.0/") = R10
- 0.625" strapping
- 1.0" wood siding



VERT Design Incorporated
279 CRICHTON STREET - OTTAWA
613.244.9484
green@vertdesign.ca . www.vertdesign.ca

Project Name: 51
Crichton & Dufferin

Project Location:
**205 Crichton Street
Ottawa**

Date Issued:
2015-02-07

Copyright reserved. All parts of this drawing are the exclusive property of the designer and shall not be used without the expressed permission of Vert Design Incorporated.

**Typical Wall
Assembly**

1" = 1'-0"